

Series *PW* 2000 • 3000 • 4000 • 5000

Filter Regulator



Specifications

Model	PW2000	PW3000	PW4000	PW5000
Port size Rc(PT)/NPT	1/8", 1/4"	1/4", 3/8"	3/8", 1/2"	3/4", 1"
Max. Supply Pressure	1.5MPa(213 PSI)			
Max. Operating Pressure	1MPa(150 PSI)			
Regulating Range	0.05~0.85MPa(7~125 PSI)			
Port size for Pressure Gauge	1/8" (Rc(PT)/NPT)			
Ambient and Media Temperature	5~60°C(40~140°F)			
Filtration	Standard : 10µm / Option : 5µm			
Bowl Capacity (oz)	0.9	1.2	2.7	4.8
Bowl Material	Polycarbonate			
Construction/Regulator	Relieving type			
Weight kgf(lbs)	0.3(0.66)	0.56(1.23)	1.15(2.54)	1.41(3.11)

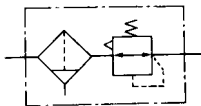
Accessories(Optional)

Name	Part No.			
	PW2000	PW3000	PW4000	PW5000
Bracket	PR2000-43-6005	TAR3000-43-6005	TAC4000-09-6003	TAC4000-09-6003
Pressure gauge	TAR 4000 - 16 - 6001/PR4000-16-6001U			
Auto Drain	* PF2000-01A-6039	TAF3000-01A-6008	TAF4000-01A-6009	PF5000-01A-6071

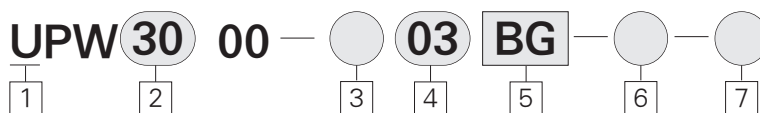
- Min. operating pressure: N · O-14.2PSI (Float type)

* Differential Pressure type

Symbol



How to Order



1 Port

Blank : Rc(PT)
U : NPT

2 Body Size Rc(PT)/NPT

20 : NPT 1/4"
30 : NPT 3/8"
40 : NPT 1/2"
50 : NPT 1"

3 Port

Blank : Rc(PT)
G : Rc(PF)

4 Port Size

01 : 1/8"
02 : 1/4"
03 : 3/8"
04 : 1/2"
06 : 3/4"
10 : 1"

5 Accessory

B : Bracket
D : Auto drain: Float type(N.O)
DF : Auto drain: Thread Type
* UPW2000 :
Differential Pressure type
G : Pressure gauge

6 Bowl Guard

C : With Bowl Guard
(2000, 3000 only)
* 4000, 5000 : Standard

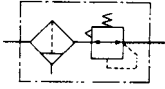
7 Special Option

Blank : None(Standard Type)
XC16 : Copper-free

Series PW

Construction/Parts List

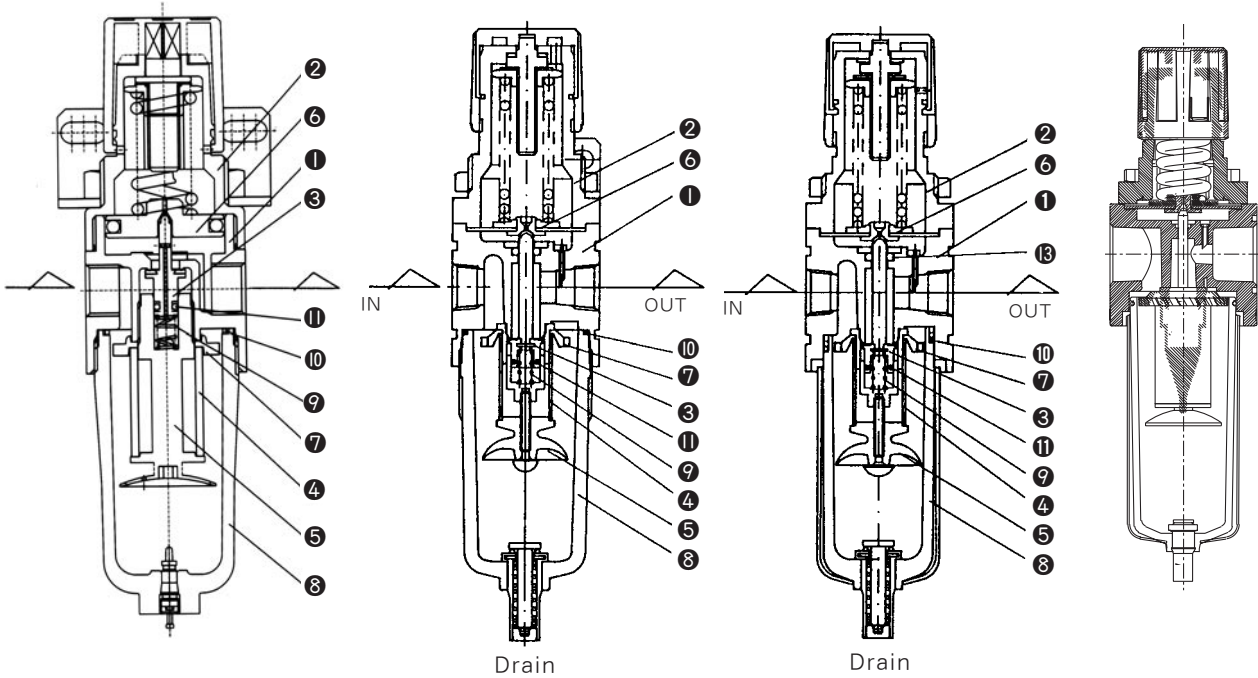
Symbol



PW2000

PW3000

PW4000



Main Parts

No.	Name	Material				Note
		PW2000	PW3000	PW4000	PW5000	
①	Body	Zinc die casting	Aluminum Die Cast		Baked Enamel Paint(Powder Coating)	
②	Bonnet	Polyacetal	Polyacetal	Aluminum Die Cast	Black Paint	

Parts List

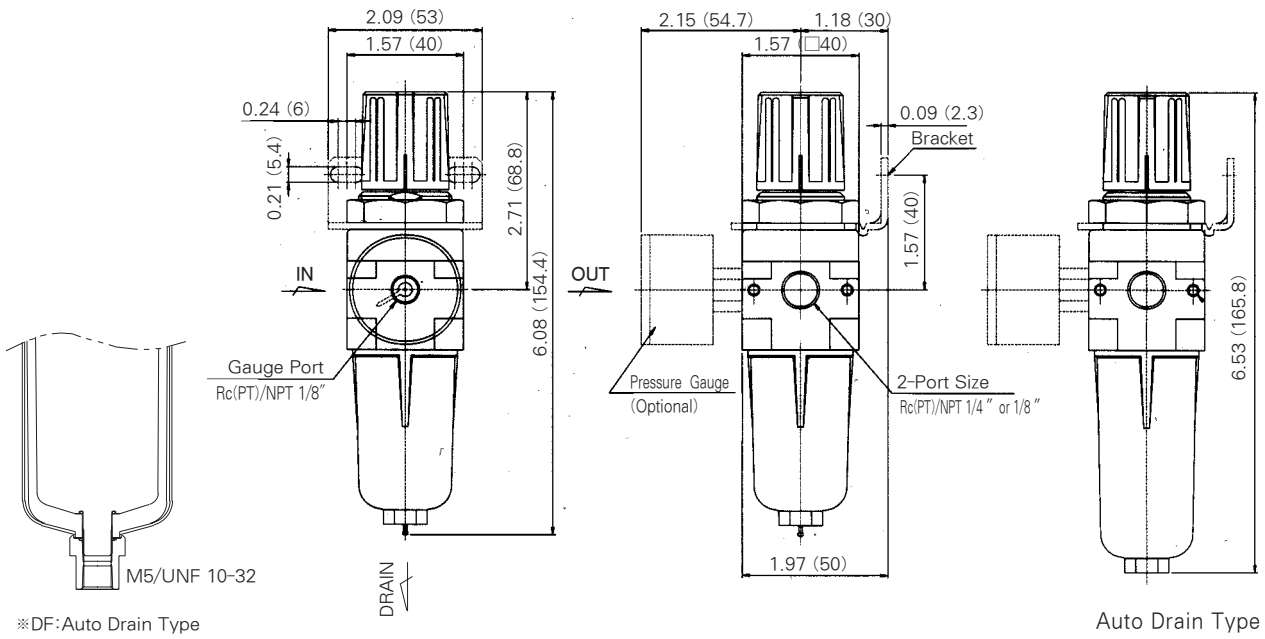
No.	Parts Name	Material	Part No.			
			PW2000	PW3000	PW4000	PW5000
③	Valve Ass'y	Brass · NBR	PR2000-10-6035	TAW3000-10A-6009	TAW4000-10A-6010	PW5000-10A-6074
④	Filter Element	Bronze	PF2000-05-6034	TAF3000-05-6004	TAF4000-05-6000	TAF4000-05-6000
⑤	Baffle	ABS	PF2000-06-6034	TAF3000-06-6004	TAF4000-06-6000	PW5000-06-6071
⑥	Diaphragm Ass'y**	NBR	PR2000-13-6035	TAR3000-13-6005	TAR4000-13-6001	TAR4000-13-6001
⑦	Deflector	ABS	PF2000-04-6034	TAF3000-04-6004	TAF4000-04-6000	PW5000-09-6074
⑧	Bowl Ass'y**	Polycarbonate	PF2000-07-6034	TAF3000-07-6004	TAF4000-07-6000	PF5000-07-6071
⑨	Valve Spring	Stainless steel	PR2000-17-6035	TAW3000-18-6009	TAW4000-18-6010	TAW4000-18-6010
⑩	Case O-ring	NBR	V024-08-6035	TAF3000-08-6004	TAF4000-08-6000	TAF4000-08-6000
⑪	Valve O-ring	NBR	V006-23-6034	TAW3000-23-6009	TAW4000-23-6010	TAW4000-23-6010
⑬	O-ring	NBR	-	TAR4000-04-6001	TAR4000-04-6001	TAR4000-04-6001

** Note) Bowl assemblies of PW4000 are fitted with bowl guards(SPC).
 ** PW2000 Piston Type

Dimensions

inch(mm)

PW2000

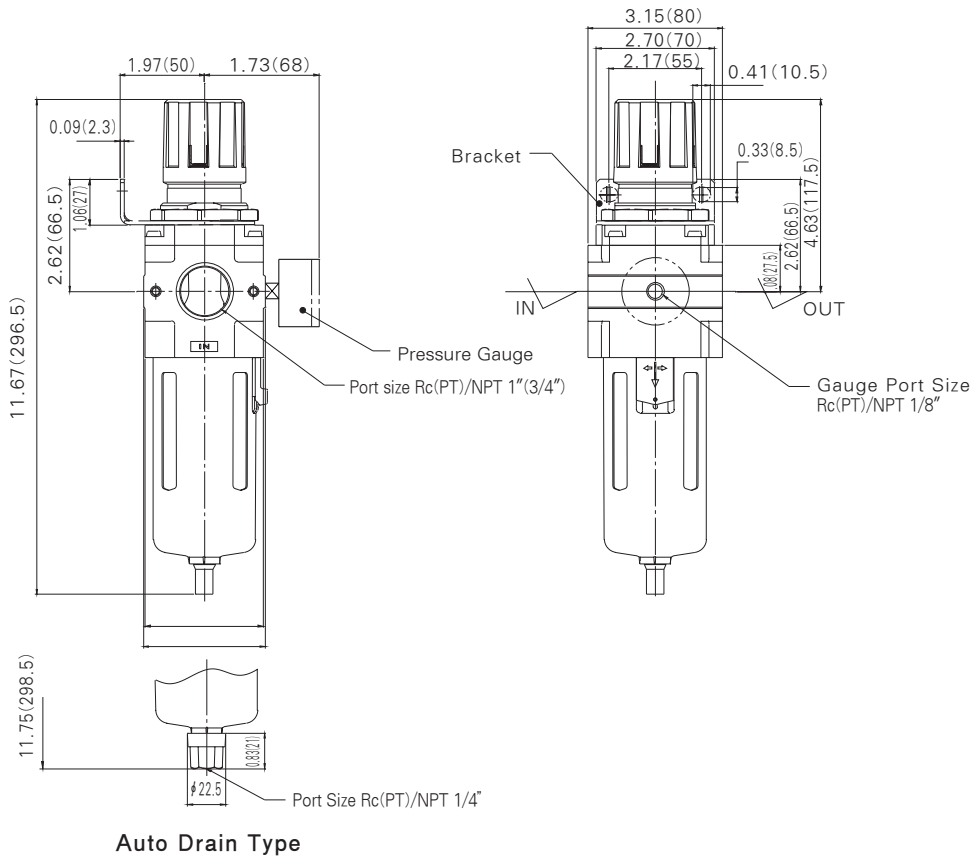


PC
PF
PFH PFU
PR
PL
PW
SH
TDF
TAD
PER
EP

Dimensions

mm(inch)

PW5000

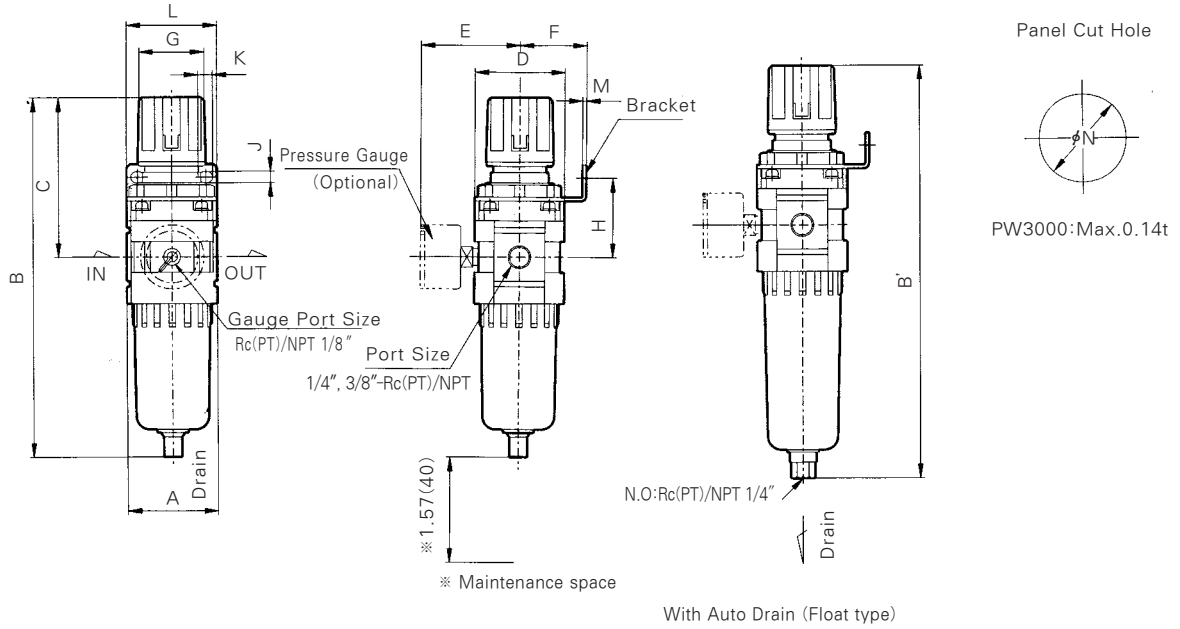


Series PW

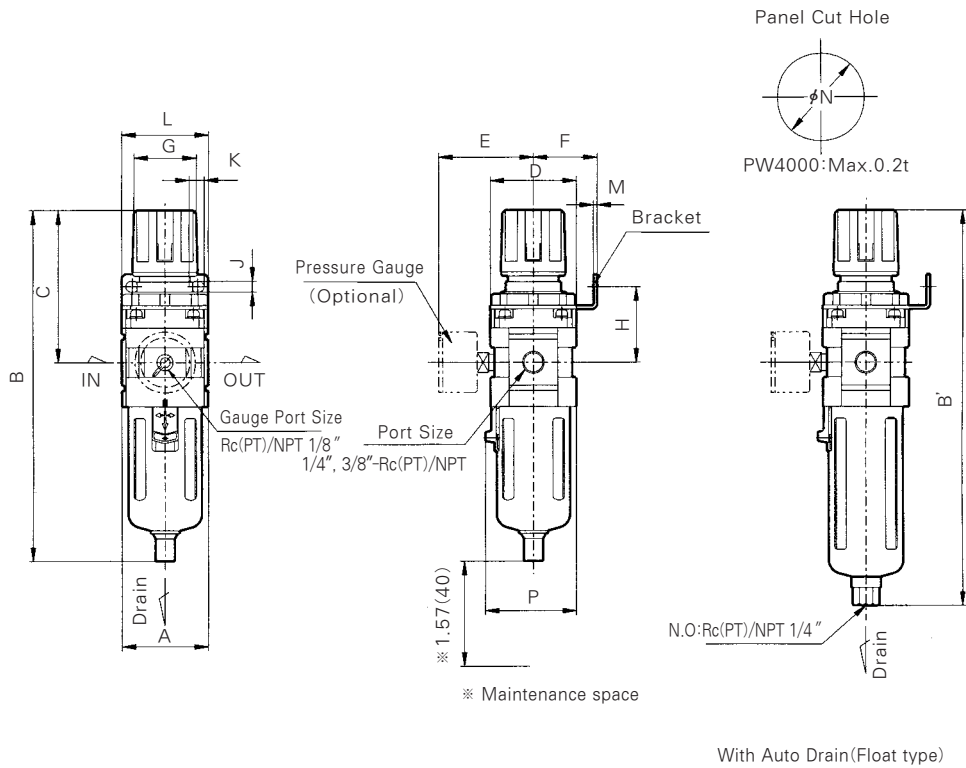
Dimensions

inch(mm)

PW3000



PW4000



Model	Port Size Rc(PT)/NPT	A	B	C	D	E	F	G	H	J	K	L	M	φN	P	inch(mm)
																With Auto Drain Float type N.O B'
PW3000	1/4" · 3/8"	2.09 (53)	8.30 (211)	3.64 (92.5)	2.09 (53)	2.42 (61.5)	1.61 (41)	1.57 (40)	1.81 (46)	0.26 (6.5)	0.31 (8)	2.09 (53)	0.09 (2.3)	1.67 (42.5)	-	9.31 (236.5)
PW4000	3/8" · 1/2"	2.76 (70)	10.47 (266)	4.41 (112)	2.76 (70)	2.67 (68)	1.97 (50)	2.13 (54)	2.13 (54)	0.33 (8.5)	0.41 (10.5)	2.76 (70)	0.09 (2.3)	2.07 (52.5)	2.87 (73)	11.34 (288)

selection

- Pull the adjustment handle to release the lock and push the handle to engage the lock. If it does not lock easily, turn the handle slightly clockwise or counterclockwise before pushing it.
- Turning the pressure adjustment handle clockwise increases the secondary pressure and turning it counterclockwise decreases the pressure.
- Make sure to check the supply pressure before setting the pressure.
- The range for setting the secondary pressure is $\leq 85\%$ of the supply pressure.

Piping

- Make sure to clean up chips, cutting oil, dust, etc., before piping.
- When installing piping or fitting into a port, ensure that sealant material does not enter the port inside. When using seal tape, leave 1.5 to 2 threads exposed on the end of pipe/fitting.

Maintenance Inspection

Warning

- Replace the filter element within 2 years of operation or before the pressure drop reaches 0.1MPa. Failure to observe this precaution could damage the filter element.

Installation and Adjustment

Warning

- Set up the regulator while verifying the pressure that is indicated on the supply and the secondary pressure gauges. Turning the handle excessively could damage the internal parts.
- The pressure gauge that is provided with the product for setting a pressure between 0.02 to 0.2MPa is the 0.2MPa style. To prevent damage to the pressure gauge, make sure that pressure in excess of 0.2MPa is not applied.
- The adjustment handle must be operated manually. Using a tool to turn the handle could lead to damage.

Operating Environment

- The body and the sight dome material is polycarbonate. Therefore, this product cannot be used in an environment or location that is exposed to synthetic oils, organic solvents, chemicals, or a threadlock agent, etc., which affect the strength of polycarbonate and could cause damage to the product.

Do not use in a press machine. It causes damage and malfunction.

Auto Drain

Pressure Differential auto drain (N.O)

- When marking drain exhaust piping, Do NOT pipe upwards.
- Use Compressor with capacity more than 0.75kw [100Nℓ /min]
- Set Pressure more than 0.1Mpa

PC

PF

PFH
PFU

PR

PL

PW

SH

TDF

TAD

PER

EP